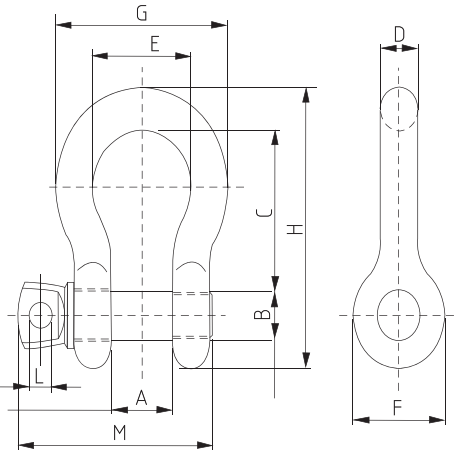


Shackles

GPT-BS-0028 - Screw pin bow shackle



Description:

- Designed for frequent, non permanent applications
- Suitable for overhead lifting
- CE, Traceability code, Grade, Size, WLL & GRIPTON or GPT embossed

Standard: US federal specification RR-C-271 D Type IVA, Grade A / BSEN 13889

Material: Body: Forged Carbon Steel, Pin: Alloy Steel

Factor of safety: 6 to 1

Construction: Quenched & tempered

Proof load: Individually proof tested to 2 times of working load limit

Finish: Body: Hot dip galvanized, Pin: Powder coated

Screw Pin Bow Shackle

| Size (in) | WLL (T) | A (in) | B (in) | C (in) | D (in) | E (in) | F (in) | G (in) | H (in) | L (in) | M (in) | Weight (lbs) |
|-----------|---------|--------|--------|--------|--------|--------|--------|--------|--------|--------|--------|--------------|
| 1/4" | 0.5 | 0.51 | 0.31 | 1.14 | 0.27 | 0.79 | 0.69 | 1.30 | 1.90 | 0.16 | 1.50 | 0.1 |
| 5/16" | 0.75 | 0.53 | 0.37 | 1.22 | 0.31 | 0.85 | 0.83 | 1.48 | 2.14 | 0.20 | 1.67 | 0.19 |
| 3/8" | 1.00 | 0.67 | 0.44 | 1.44 | 0.39 | 1.03 | 0.98 | 1.81 | 2.54 | 0.22 | 2.11 | 0.31 |
| 7/16" | 1.50 | 0.73 | 0.50 | 1.69 | 0.44 | 1.16 | 1.06 | 2.03 | 2.90 | 0.24 | 2.32 | 0.38 |
| 1/2" | 2.00 | 0.81 | 0.62 | 1.88 | 0.50 | 1.31 | 1.22 | 2.32 | 3.31 | 0.30 | 2.76 | 0.72 |
| 5/8" | 3.25 | 1.06 | 0.75 | 2.36 | 0.63 | 1.69 | 1.57 | 2.95 | 4.15 | 0.35 | 3.44 | 1.37 |
| 3/4" | 4.75 | 1.26 | 0.87 | 2.81 | 0.75 | 2.01 | 1.89 | 3.50 | 4.94 | 0.39 | 3.98 | 2.35 |
| 7/8" | 6.50 | 1.46 | 0.98 | 3.33 | 0.87 | 2.28 | 2.13 | 4.02 | 5.75 | 0.41 | 4.57 | 3.62 |
| 1" | 8.50 | 1.71 | 1.10 | 3.79 | 1.04 | 2.70 | 2.36 | 4.67 | 6.51 | 0.47 | 5.33 | 5.03 |
| 1-1/8" | 9.50 | 1.89 | 1.26 | 4.29 | 1.14 | 2.95 | 2.68 | 5.24 | 7.40 | 0.59 | 5.71 | 7.41 |
| 1-1/4" | 12.00 | 2.09 | 1.38 | 4.74 | 1.26 | 3.31 | 2.99 | 5.83 | 8.19 | 0.65 | 6.30 | 9.5 |
| 1-3/8" | 13.50 | 2.32 | 1.50 | 5.28 | 1.38 | 3.70 | 3.31 | 6.46 | 9.06 | 0.75 | 7.01 | 13.53 |
| 1-1/2" | 17 | 2.44 | 1.65 | 5.85 | 1.50 | 3.90 | 3.62 | 6.89 | 9.98 | 0.83 | 7.64 | 17.2 |
| 1-3/4" | 25 | 2.95 | 1.97 | 7.01 | 1.77 | 5.04 | 4.17 | 8.62 | 11.87 | 0.91 | 8.98 | 27.78 |
| 2" | 35 | 3.31 | 2.20 | 7.76 | 2.05 | 5.83 | 4.80 | 9.92 | 13.31 | 0.98 | 10.04 | 45 |
| 2-1/2" | 55 | 4.21 | 2.76 | 10.61 | 2.60 | 7.32 | 5.71 | 12.52 | 17.44 | 1.30 | 12.48 | 85.75 |