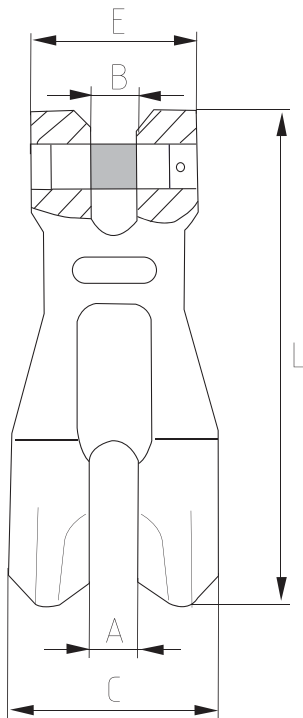


Grade 80 - End Fittings

GPT-SC-004 - Shortening clutch



Description:

- Designed for use with grade 80 alloy steel chain
- Used for shortening or holding required length of chain
- Size, CE, WLL, Traceability code & GRIPTON or GPT embossed

Standard: BS EN 1677-4

Material: Alloy steel

Factor of safety: 4 to 1

Construction: Quenched & tempered

Proof load: 2 times of working load limit

Finish: Powder coated

Shortening Clutch						
WLL (T)	A (mm)	B (mm)	C (mm)	E (mm)	L (mm)	Weight (Kg)
2	9.5	9.5	45	36	101	0.41
3.15	13	13	55	48	138	0.97
5.3	18	16	75	59	177	2.01
8	21	21	93	73	220	3.32
12.5	22	22	99	78	238	6.20
15	25.5	25.5	118	98	295	8.50